



■ 汤顿国王学院图书馆 Kings College Library

建筑师: Mitchell Taylor Workshop
 甲方: 汤顿国王学院
 结构工程师: Structures 1
 机电工程师: Buro Happold
 承包商: RG Spiller
 摄影师: Peter Cook



该建筑场地面积有限，而且相当复杂：必须保留现存列管建筑的底层，并且以锯齿状的形式用新建筑包裹老建筑。底层为办公室、资源空间和教学空间，而二层为图书馆。受场地条件所限，建筑物的平面进深较大，因此形成了如下方案：在锯齿状屋顶设计了一排高高的北向采光天窗，为室内带来了充足的自然光线和良好的通风效果。

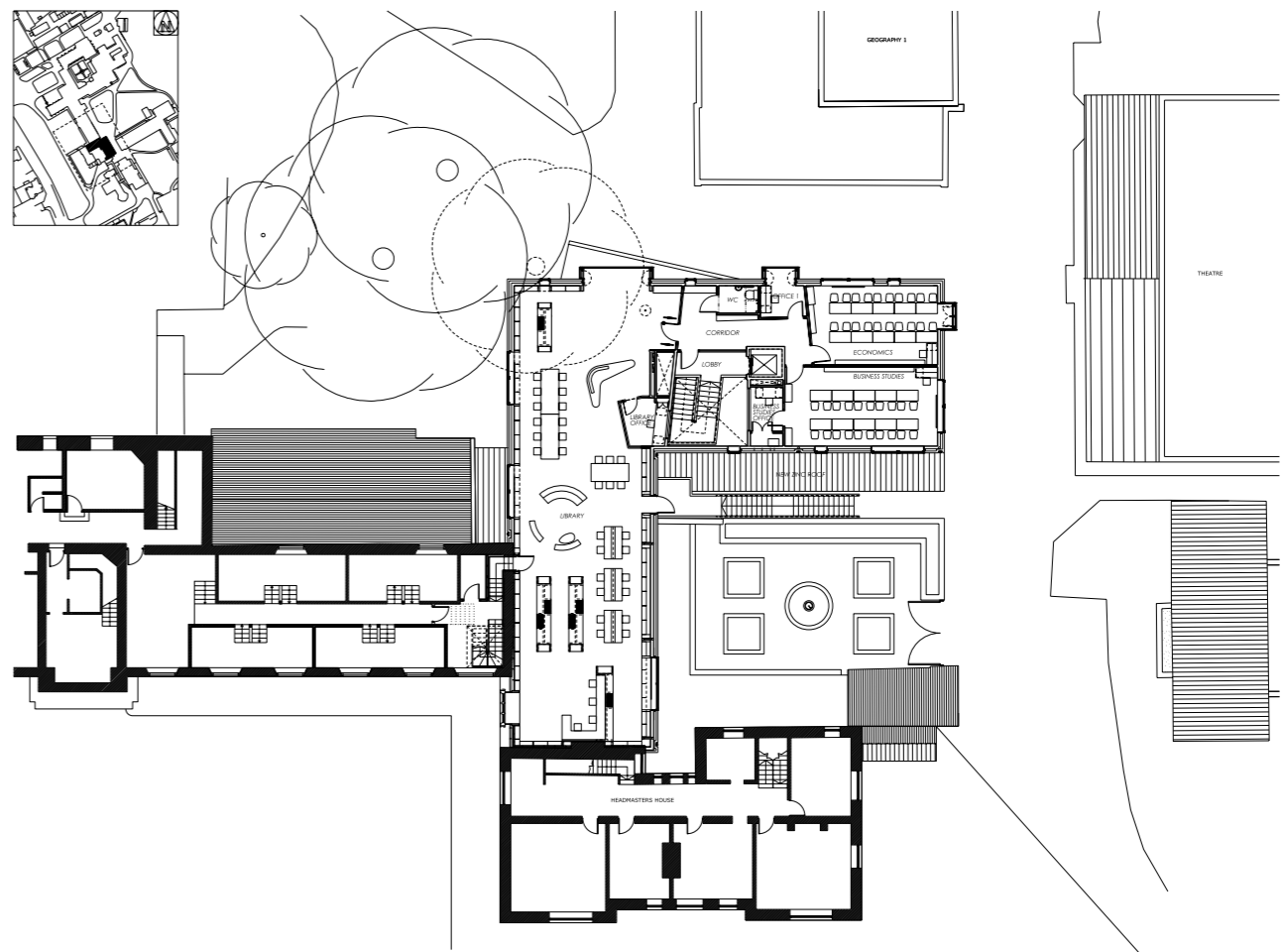
建筑师将原本是尖角的山墙端头转化为巫婆



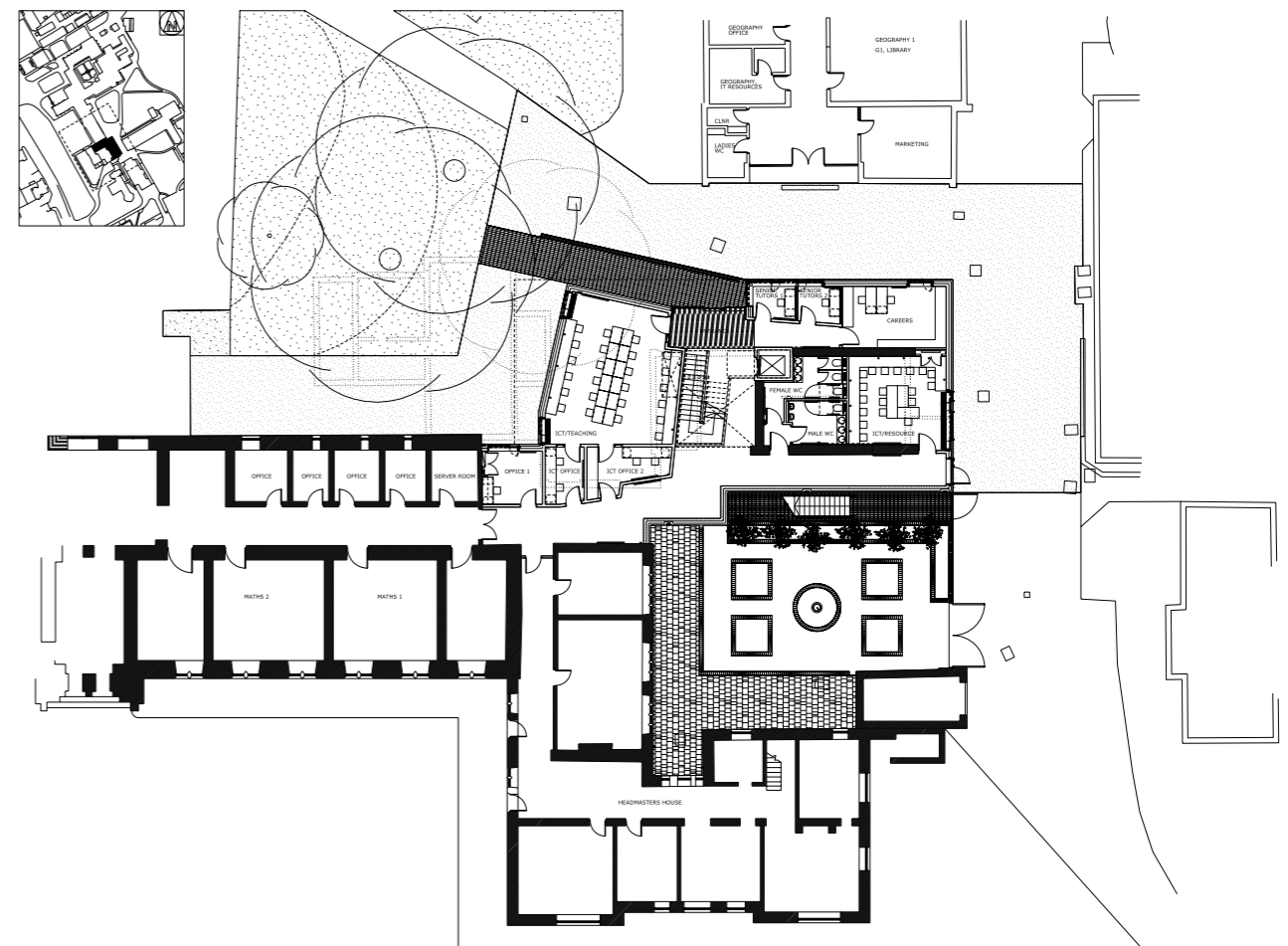
总平面图
Site plan

帽子的形状，以此最大化获得通风和采光，同时屋顶摆脱了传统的锯齿形状，赋予建筑一种独特的标志。而从室内来说，这种屋顶也形成了宽敞而通透的图书馆空间。

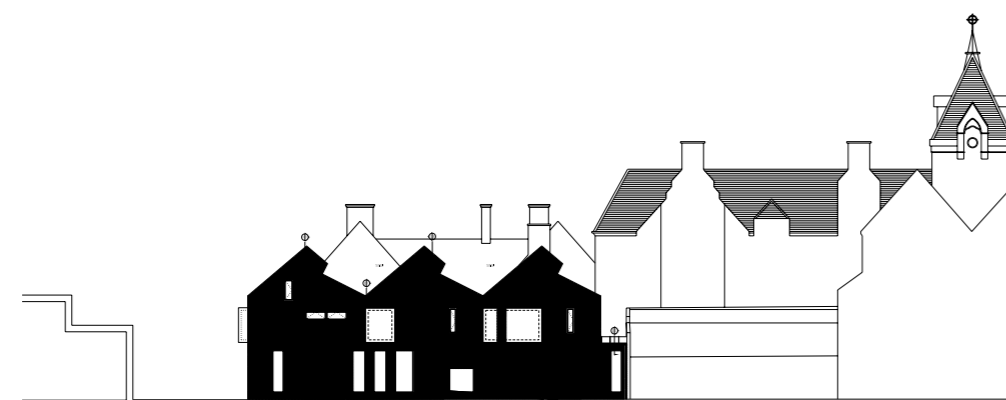
窗口随机布置在建筑外围护结构上，其中一些隔间是阅读区，窗口既能让学生们欣赏到室外的景色，也能令立面显得更加生动。许多独立于建筑物开放的穿孔金属网可用于提供通风效果。



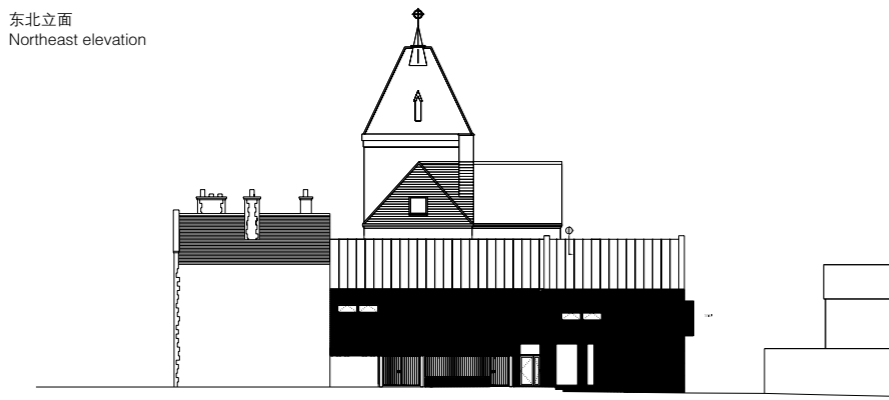
二层平面图
First floor plan



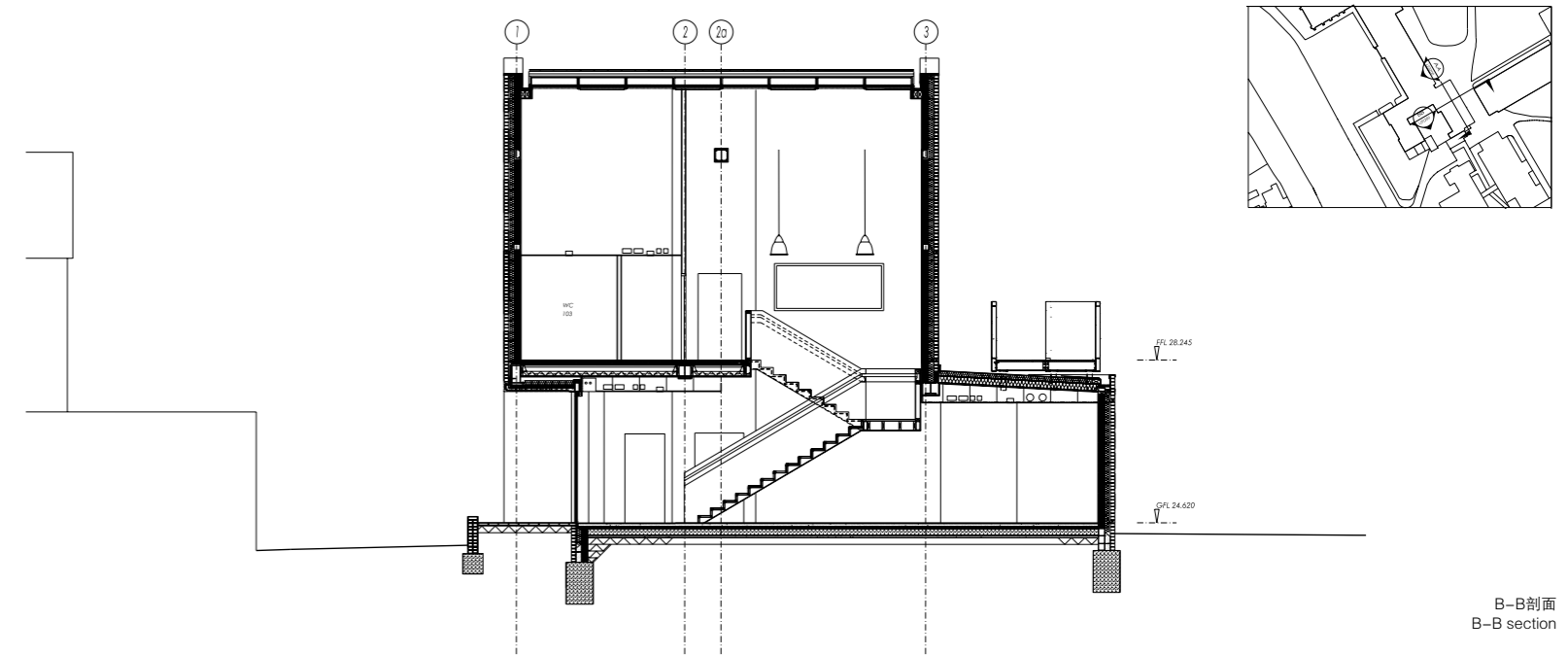
一层平面图
Ground floor plan



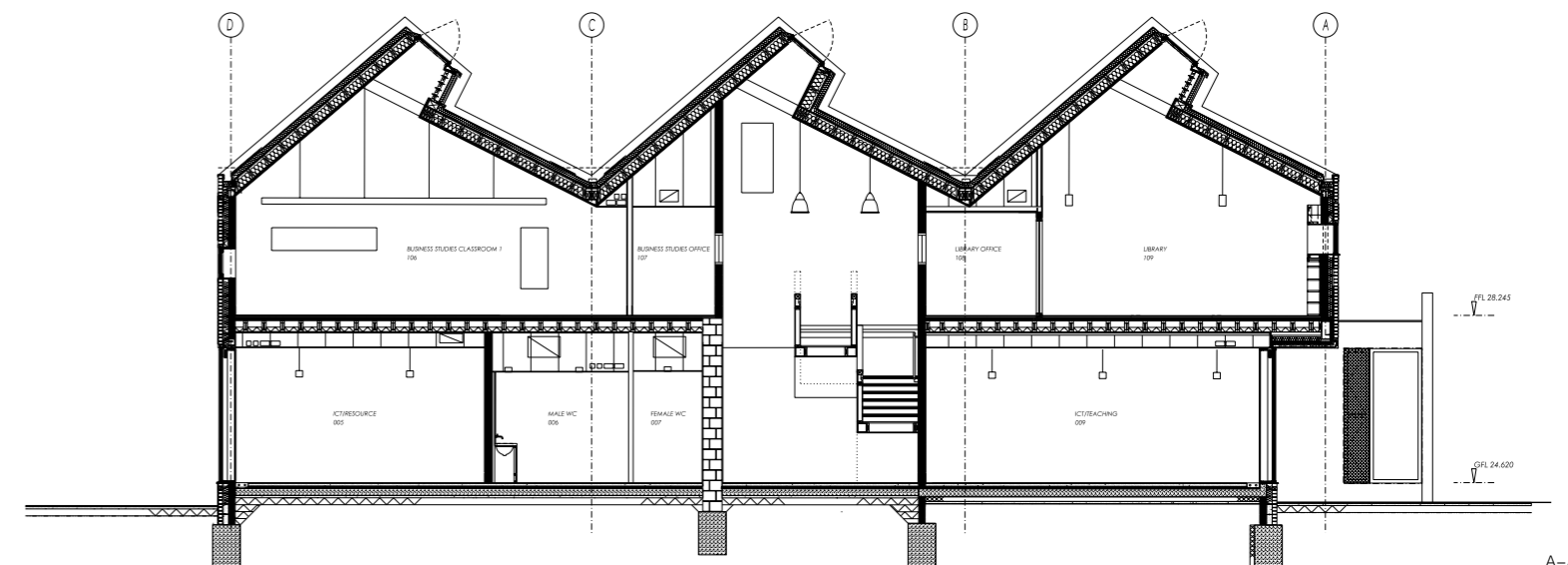
东北立面
Northeast elevation



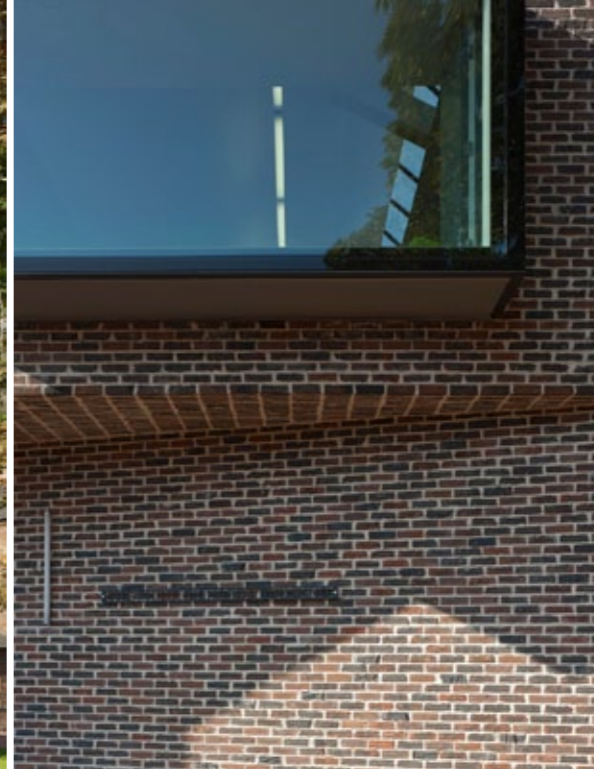
东南立面
Southeast elevation



B-B剖面
B-B section



A-A剖面
A-A section



The site is tight and reasonably complex: existing listed buildings had to be retained at ground level and were enveloped in a jigsaw like fashion by the new building. At ground floor are offices, resource spaces and teaching spaces, and at first floor is the library. The site dictated a deep plan building, which ultimately drove the architectural solution – a series of lofty sawtooth north lights that provide large levels of natural light and ventilation. The pointy gable ends developed into the witches hat shapes to maximise ventilation and lighting, move them beyond a conventional sawtooth, and give the building a kind of signature. Internally, they provide a lofty and airy open plan library space. The envelope was then worked into to provide strategic views out – hence the randomly placed windows – with a number of bays providing reading spaces and animating the facade, with ventilation provided by a number of perforated metal screens that open independently of the (entirely naturally ventilated) building.

