



FIRST LOOK

**Mitchell Taylor completes 'model' affordable houses**

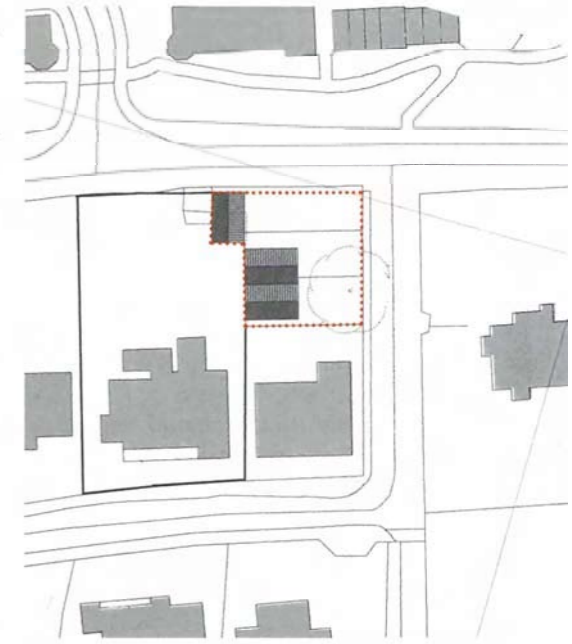
Mitchell Taylor Workshop has completed this £200,000 three-house scheme on a suburban estate in Tiverton, Devon.

Finished in only 22 weeks, the project was built for less than £900 per m<sup>2</sup> using materials entirely sourced from a local branch of Jewson.

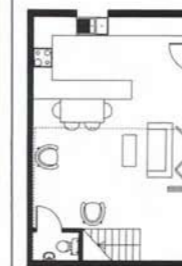
The houses are clad in hung slates or tiles with 'bog standard' square gutters and pipes.

Practice founder Piers Taylor said: 'For us, it is always about building efficiently, cost effectively and in a loose-fit way so that any builder can put it up without us having to breathe down their neck.'

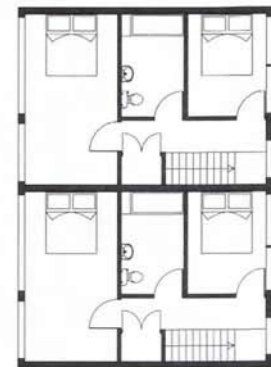
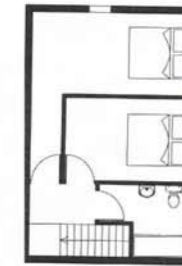
'We have a mini-manifesto about striving to build the ordinary well in a reasonably effortless way. This is a model for interesting, affordable housing,' *Richard Waite*



Ground floor



First floor



MITCHELL TAYLOR

