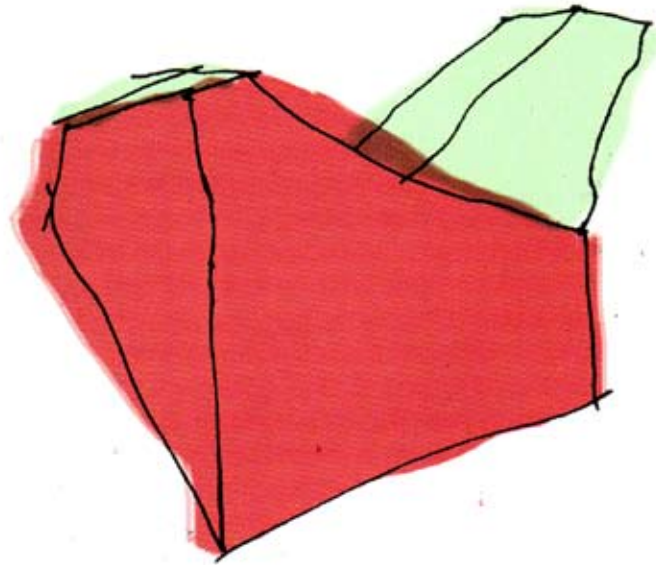


Sketch

PUBLIC BUILDINGS

How Architects Conceive Public Buildings

Mitchell Taylor Workshop

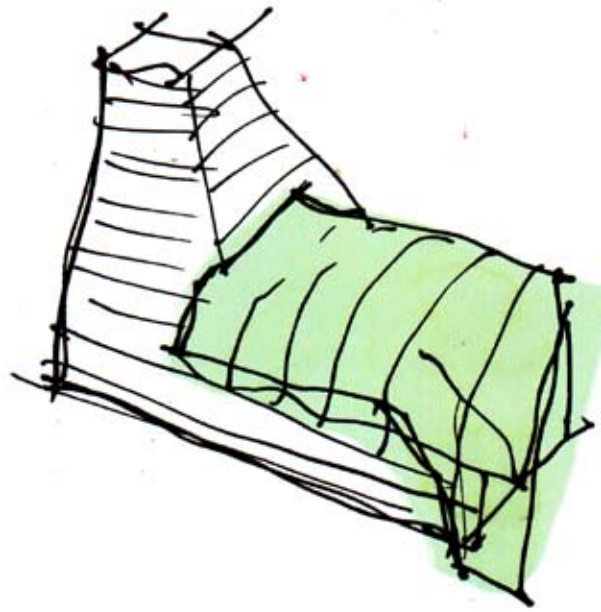
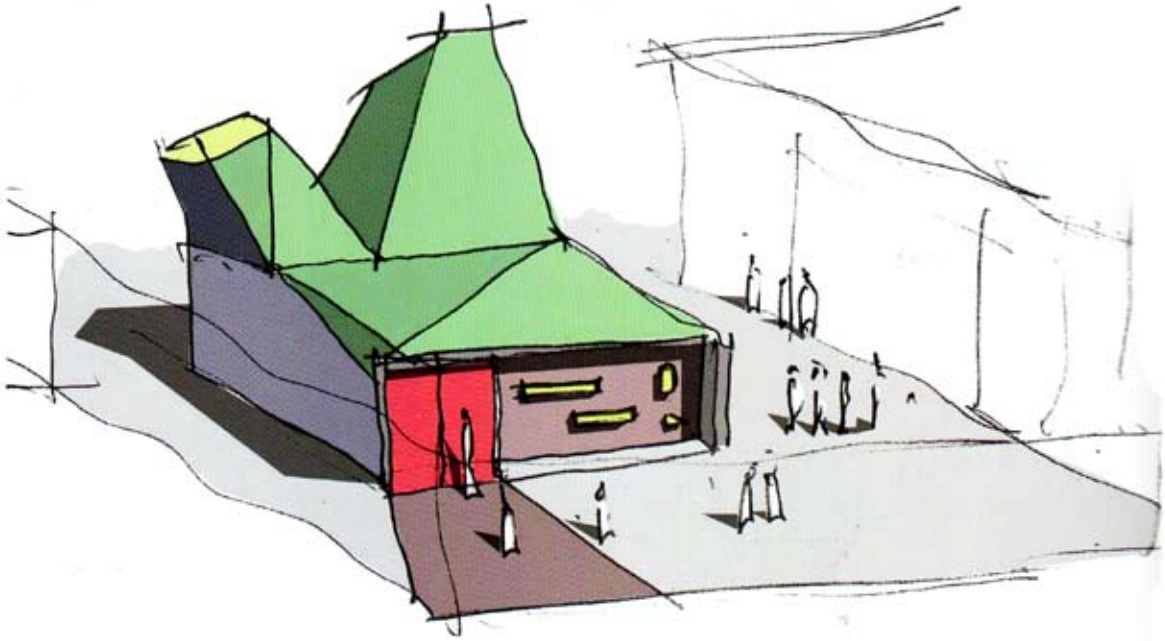


Room 13 Bristol, United Kingdom

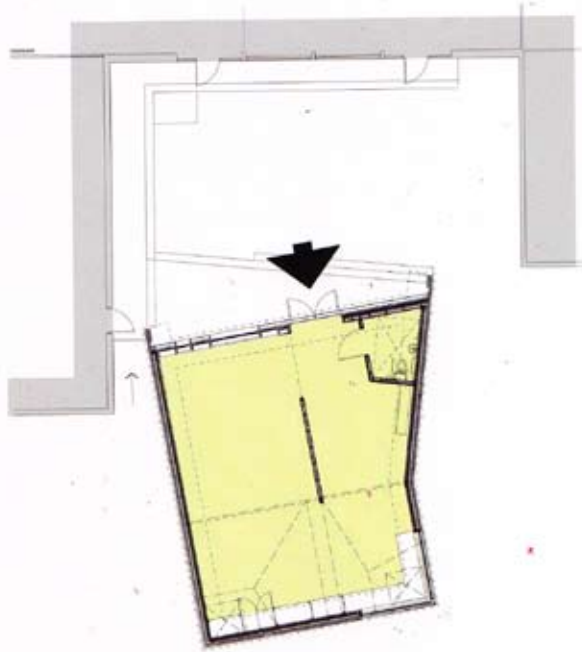
■ Room 13 is a space democratically administered by the students of the school who commissioned the project. Hareclive Primary School appointed the architects to design a space that would function as a classroom and art room. It would substitute the art room of the existing school and provide a space to exhibit the students' artistic creations. Room 13 is a large area lit by skylights, although the interior can be divided into various compartments to facilitate its use as a classroom and community area. The building materials are cheap and hardy: concrete blocks for three of the four exterior walls, glass for the north façade and a roof made from Sarnafil. Storage areas were built inside for material and equipment.



© Mitchell Taylor Workshop

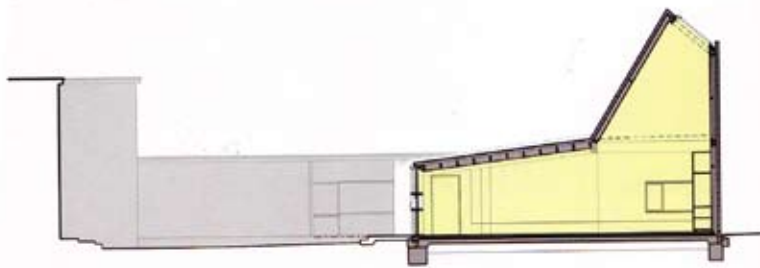


Sketches



Floor plan

0 1 2



Section

■ The studio formed by Piers Taylor and Rob Mitchell features a young and progressive team that has picked up numerous awards. Sustainable architecture and works that not only mix with the environment but connect with a site via differences is a fundamental principle of their professional practice. The projects the studio has made have scooped many awards and been published on numerous occasions. However, the architects stress that what concerns them most is that their buildings result from a careful and detailed analysis of the requirements of each and every case.

Mitchell Taylor Workshop

